

Reduce costs and improve efficiency with CE8 design

The CE Series is a well-proven design and an efficient pulse-jet cleaning system. Central Pulse Jet Filter CE8 are modular bag filters in round and octagonal shape in which the dust-laden air enters through the hopper and is evenly distributed between the filter bags. This ensures a smooth flow of both coarse and fine particles into the filter.

The innovative octagonal shape results in a compact, modular filter design that is unique with regards to manufacturability and constructability, minimizing delivery time and costs. The new modular design and octagonal shape of the filter enables the use of simple reinforcement profiles and reduces the number of different components. Eight identical panels are assembled in an octagon, which has clear stress and strain advantages thanks to its near round shape.

Benefits

Efficiency

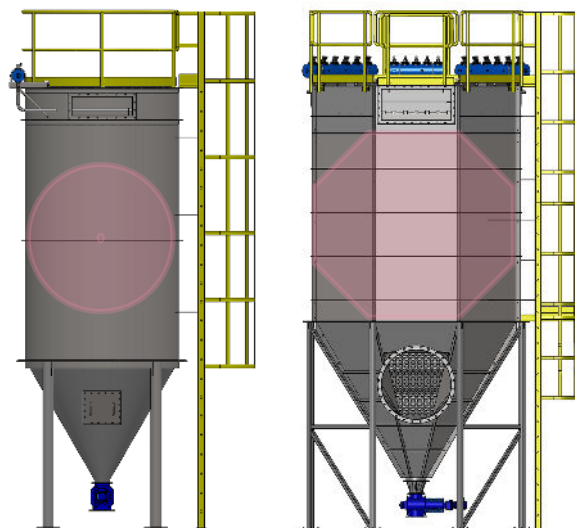
- The pulse jet system automatically cleans the bags row-by-row even as the dust is being filtered. The advantage is that the filter continues to work for you while the bags are being cleaned.
- Being a low maintenance solution, the CE8 needs minimum downtime. This means continuous plant operations for you.

Savings

- The filter control system helps maintain a low pressure drop – helping you save both compressed air and energy.
- Uses standard parts making it easy to design and assemble at site.
- Standard modules that are simple to manufacture resulting in reduced costs and delivery time.
- Casing design reduces steelwork by up to 15% over conventional rectangular filters.

Flexibility

- You can separate almost any kind of dust – fine, sticky and abrasive



Features

- Capacity: 1500 – 52000 m³/h
- Dust Load: <100 g/m³
- Filter size: 25 – 720 m² filter surface
- Available with round and octagonal shape casing and hopper
- Designed for dedusting one or several pickup points
- Ø127mm dia. bags in 3 and 4.5m length mounted on wire cages
- Standard 4.5% vacuum (450 mmWC)
- Available with steel support or as a bunker filter.
- Access facility design in accordance with EN ISO 14122
- Filter control by SimControl Advance® Controller (SCA)

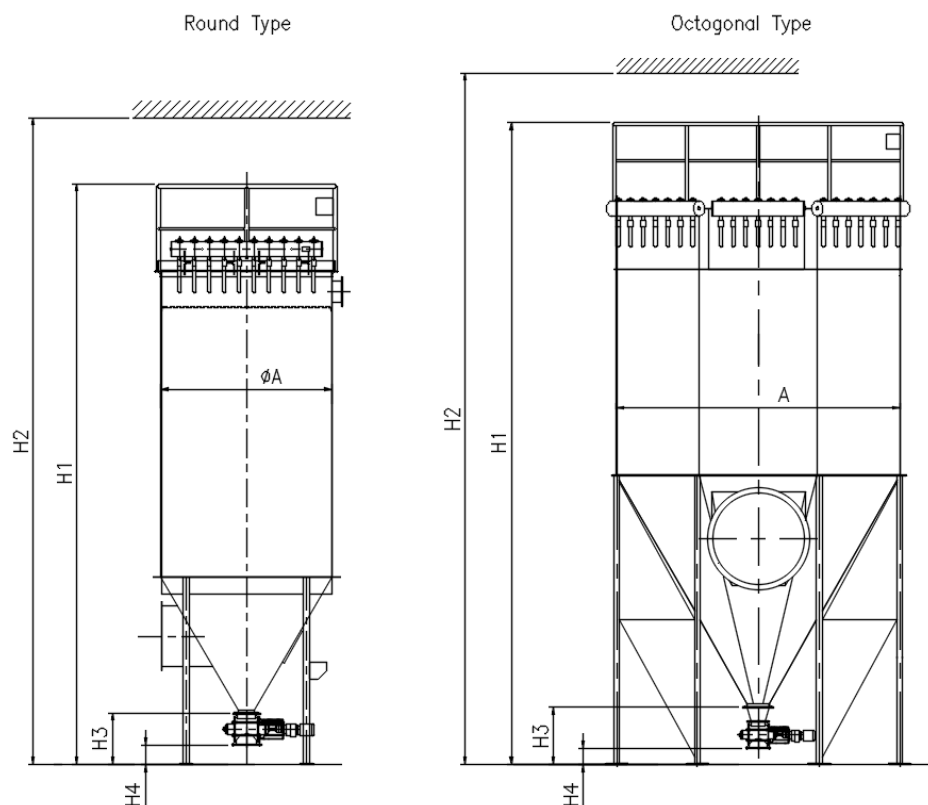
Types

- Round casing: Filter models from 21 to 76 bags
- Octagonal casing: Filter models from 97 to 400 bags
- Bunker filter with bottom mesh grid (without support and hopper)

Industries we serve for emission control and product recovery

- Cement & Lime
- Energy & Waste
- Chemical & Mineral Resources
- Feed & Grain
- Food & Dairy

Dimensioning:



Filter Model	Type	Number of bags	Max. number of bags per row	3.0 m bag - A/C max. 1.8 m/min		4.5 m bag - A/C max. 1.2 m/min		Dimension in 'mm'						Compressed air volume Nm ³ /hr
				Filtration area (m ²)	Gas flow (m ³ /h)	Filtration area (m ²)	Gas flow (m ³ /h)	ØA	A	H1*	H2 min*	H3	H4	
CE8-21-3	1	21	5	25	2722	-	-	1150	-	6069	7645	600	225	4
CE8-32-3	1	32	6	38	4147	-	-	1350	-	6251	7826	600	225	5
CE8-37-3	1	37	7	44	4795	-	-	1450	-	6349	7925	600	225	6
CE8-52-3	1	52	8	62	6739	-	-	1700	-	6559	8135	600	225	9
CE8-69-3	1	69	9	83	8942	-	-	1900	-	6729	8305	600	225	11
CE8-76-3	1	76	10	91	9850	-	-	2000	-	6809	8385	600	225	13
CE8-97-3 (4.5)	2	97	11	116	12571	174.6	12571		2100	7170	8545	600	225	16/24
CE8-120-3 (4.5)	2	120	12	144	15552	216	15552		2330	7416	8760	600	225	20/30
CE8-156-3 (4.5)	2	156	14	187	20218	281	20218		2632	7681	9087	600	225	26/38
CE8-185-3 (4.5)	2	185	15	222	23976	333	23976		2854	8210	9612	600	225	30/46
CE8-229-3 (4.5)	3	229	17	275	29678	412	29678		3187	8345	9704	800	225	38/56
CE8-301-3 (4.5)	3	301	19	361	39010	542	39010		3656	8865	10254	800	225	49/74
CE8-357-3 (4.5)	3	357	21	428	46267	643	46267		3984	9033	10424	800	225	59/88
CE8-400-3 (4.5)	3	400	22	480	51840	720	51840		4201	9346	10815	800	225	66/98

Type 1: Simple support, 4 supporting legs. One air manifold with 1" valves, single stage, Round Casing

Type 2: Simple support, 4 supporting legs. One air manifold with 1.5" valves, dual stage, Octogonal Casing with four panels

Type 3: Simple support, 8 supporting legs. Three air manifolds with 1.5" valves, dual stage, Octogonal Casing with eight individual panels

*H1 and H2 for 4.5m filter Models: Values must be additional 1500mm

For 3 and 4.5 meter bag model filter

Data subject to alterations. For custom design and larger filter sizes, please contact Simatek's sales department.