

## 3-A Symbol certified single-bag cleaning technology for high capacity filtration giving you the benefit of long bag life and energy savings.

The SimPulse 3CX baghouse is designed and certified to apply the 3-A Symbol to models of the 3CX - and 3CX-CIP for conformance to the 3-A standard 40-04 for bag collectors.



The SimPulse 3CX represents the next generation of pulse-jet filters. It uses a unique and leading filter technology based on high pulse energy, high pulse volume and low pulse pressure. It has a modular compact design for high capacity filtration. Its cylindrical design makes it possible to base large systems on parallel cylindrical modules

### Benefits

#### Efficiency

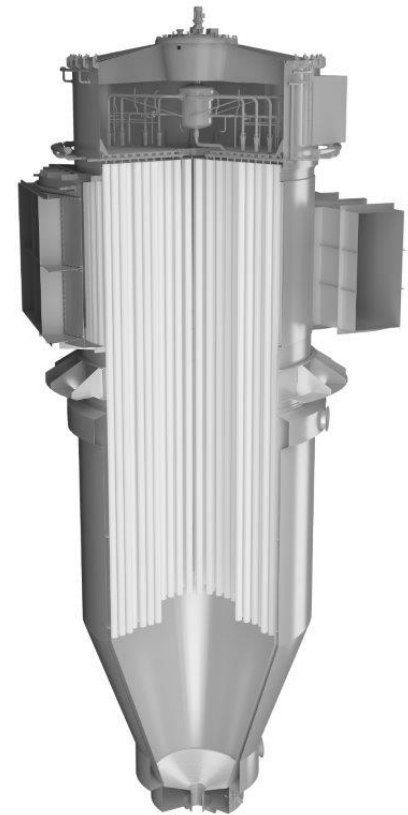
- The high energy and low pressure combination gives gentle cleaning and longer bag-life.
- Minimum temperature gradients in the filter chamber mean a reduced risk of condensation and corrosion. This means a longer production time for your filter.
- Low A/C ratio giving low pressure drop over the bag filter.

#### Savings

- Up to 30% energy savings on exhaust fan compared to conventional pulse-jet filters.
- The mechanical, PLC-controlled pulse-jet system ensures controlled, reliable, and efficient cleaning of filter bags.
- Up to 80% less energy consumption for bag cleaning compared to conventional pulse-jet filters.
- No need for high-pressure compressor means the low energy consumption. You save on investment and energy costs.
- More production up-time.
- Replaces cyclones.

#### Flexibility

- Eliminates plugging of cyclones.
- The single-bag cleaning technology means long cleaning intervals.
- Eliminates risk for condensation.



### Features

- Capacity: up to 210,000 Am<sup>3</sup>/h (123,000 ACFM)
- Cleaning pressure: 0.6-1.2 bar (14 to 30 psig)
- On-line single-bag cleaning of filter bags
- PLC-controlled pulse-jet system
- Minimum temperature gradients in the filter chamber
- Up to five times higher pulse energy compared to conventional pulse-jet bag filters
- Hot cleaning air to filter hygroscopic powder
- Hygienic design compliance to 3-A, EN1672-2 and EHEDG

### Options

- CIP (Cleaning in place)
- Filter bag CIP outside and inside.
- Air Heating Unit for CIP purge Air incl. control
- Heating jacket or Insulation
- Air Heating Unit for Heating Jacket incl. control
- Fluid bottom
- Fluid bottom heating unit incl. control
- Explosion venting panels
- Explosion suppression system
- Single bag leak detection

### Applications

Dairy Powders and other food Processing applications, which requires compliance to the 3-A.

### Construction forms

**Inlet:** 04 12, 17 and wrap around inlet  
**Fluid Bottom:** 08